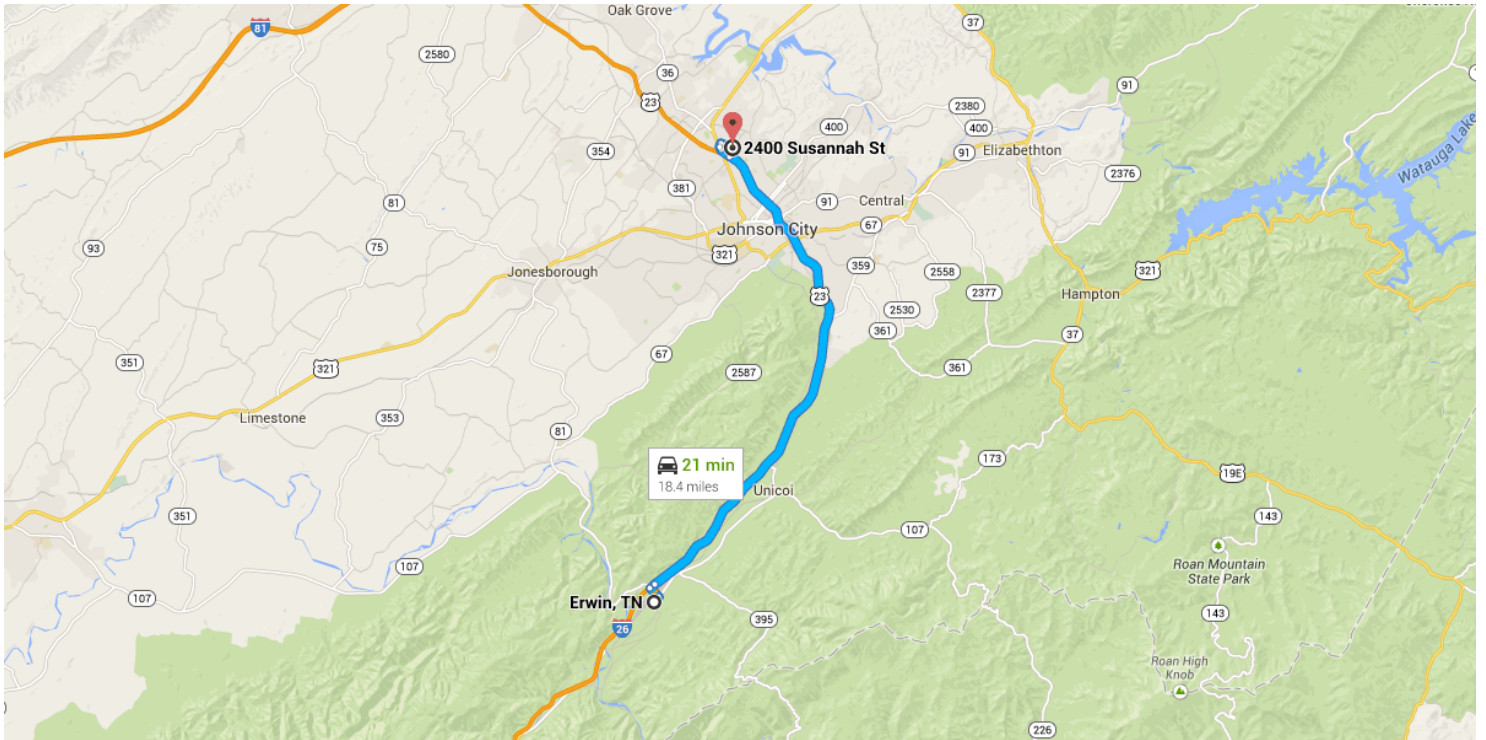




Drive 18.4 miles, 21 min

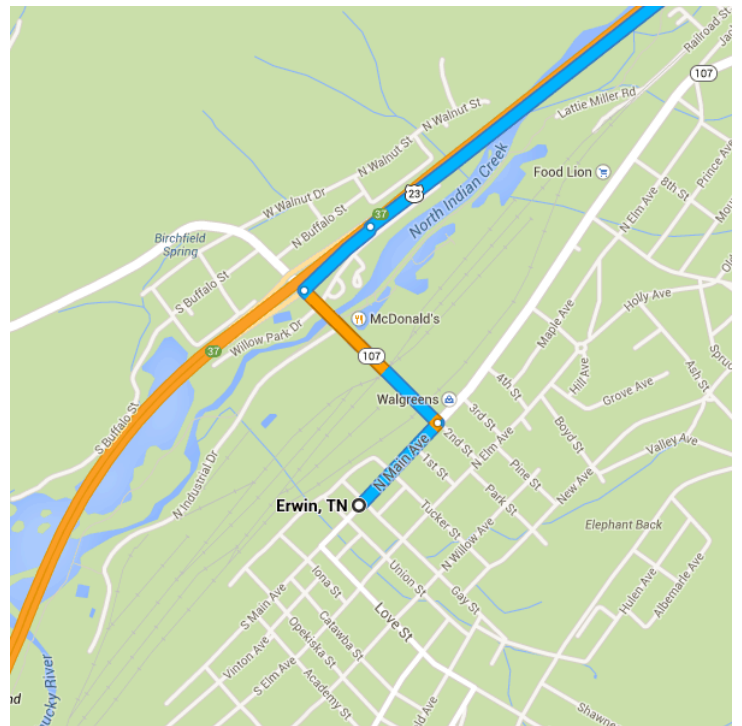
### Directions from Erwin, TN to 2400 Susannah St



### o Erwin, TN

Get on I-26 W/US-19W N/US-23 N

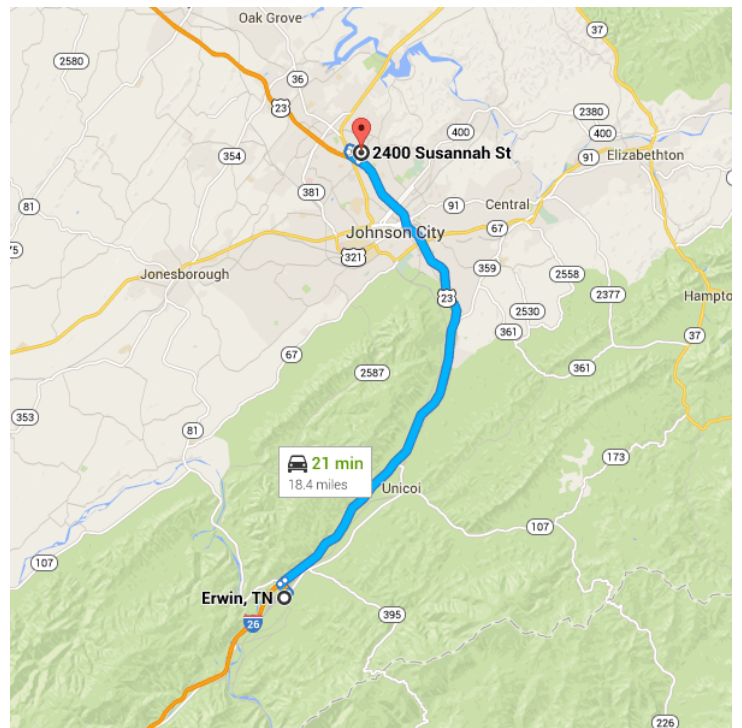
- \_\_\_\_\_ 0.8 mi / 3 min
- ↑ 1. Head northeast on S Main Ave toward Gay St
- \_\_\_\_\_ 0.2 mi
- ↶ 2. Take the 3rd left onto 2nd St
- \_\_\_\_\_ 0.4 mi
- ↗ 3. Turn right to merge onto I-26 W/US-19W N/US-23 N toward Jhonson City
- \_\_\_\_\_ 0.2 mi



Follow I-26 W/US-23 N to US-11E N/US-19W N/N Roan St in Johnson City. Take exit 20B from I-26 W/US-19W N/US-23 N

17.0 mi / 16 min

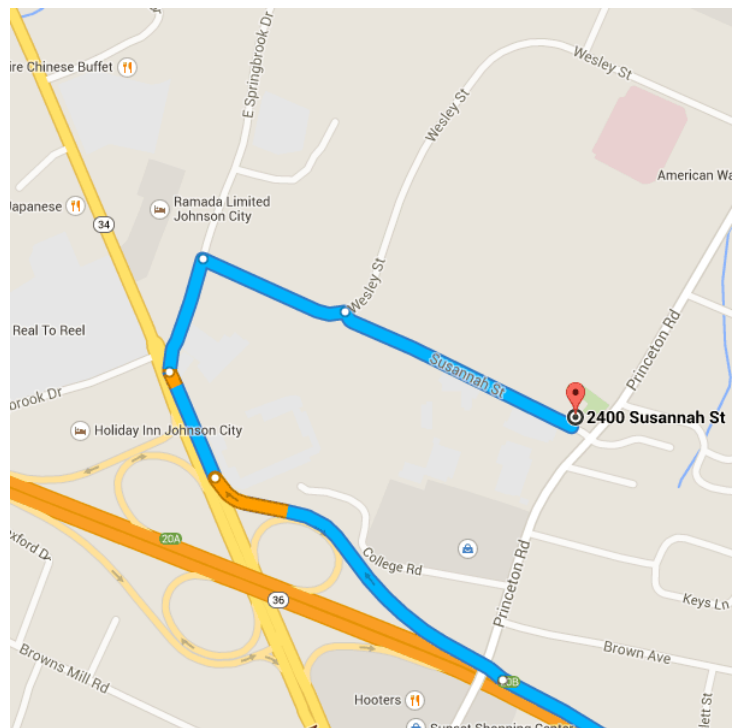
- 4. Merge onto I-26 W/US-19W N/US-23 N  
16.6 mi
- 5. Take exit 20B to merge onto US-11E N/US-19W N/N Roan St  
0.4 mi



### Drive to Susannah St

0.6 mi / 2 min

- 6. Merge onto US-11E N/US-19W N/N Roan St  
0.1 mi
  - 7. Turn right onto E Springbrook Dr  
0.1 mi
  - 8. Turn right onto Wesley St  
0.2 mi
  - 9. Take the 1st right onto Susannah St  
0.3 mi
- Destination will be on the left*



## 2400 Susannah St

Johnson City, TN 37601

These directions are for planning purposes only. You may find that construction projects, traffic, weather, or other events may cause conditions to differ from the map results, and you should plan your route accordingly. You must obey all signs or notices regarding your